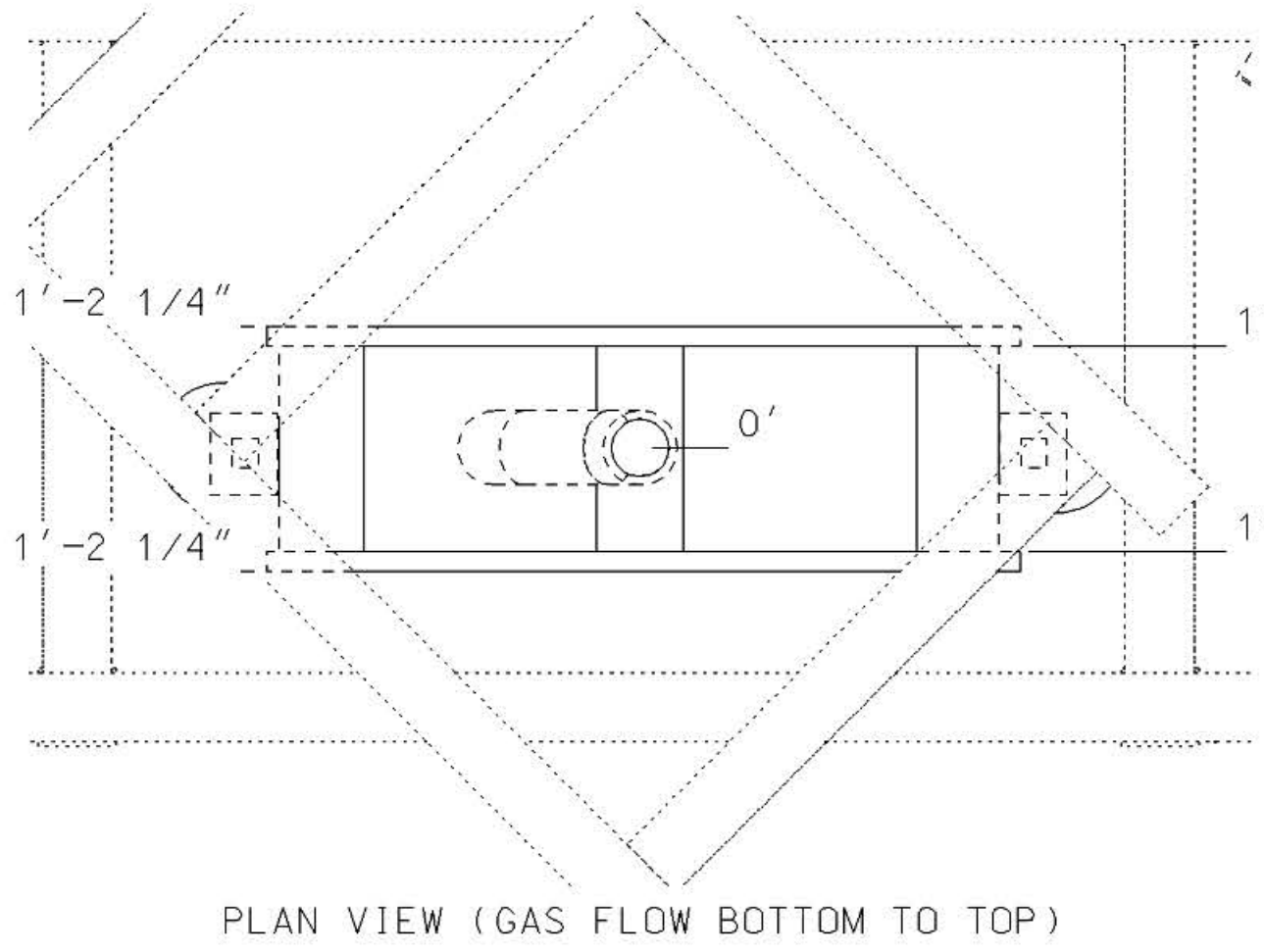
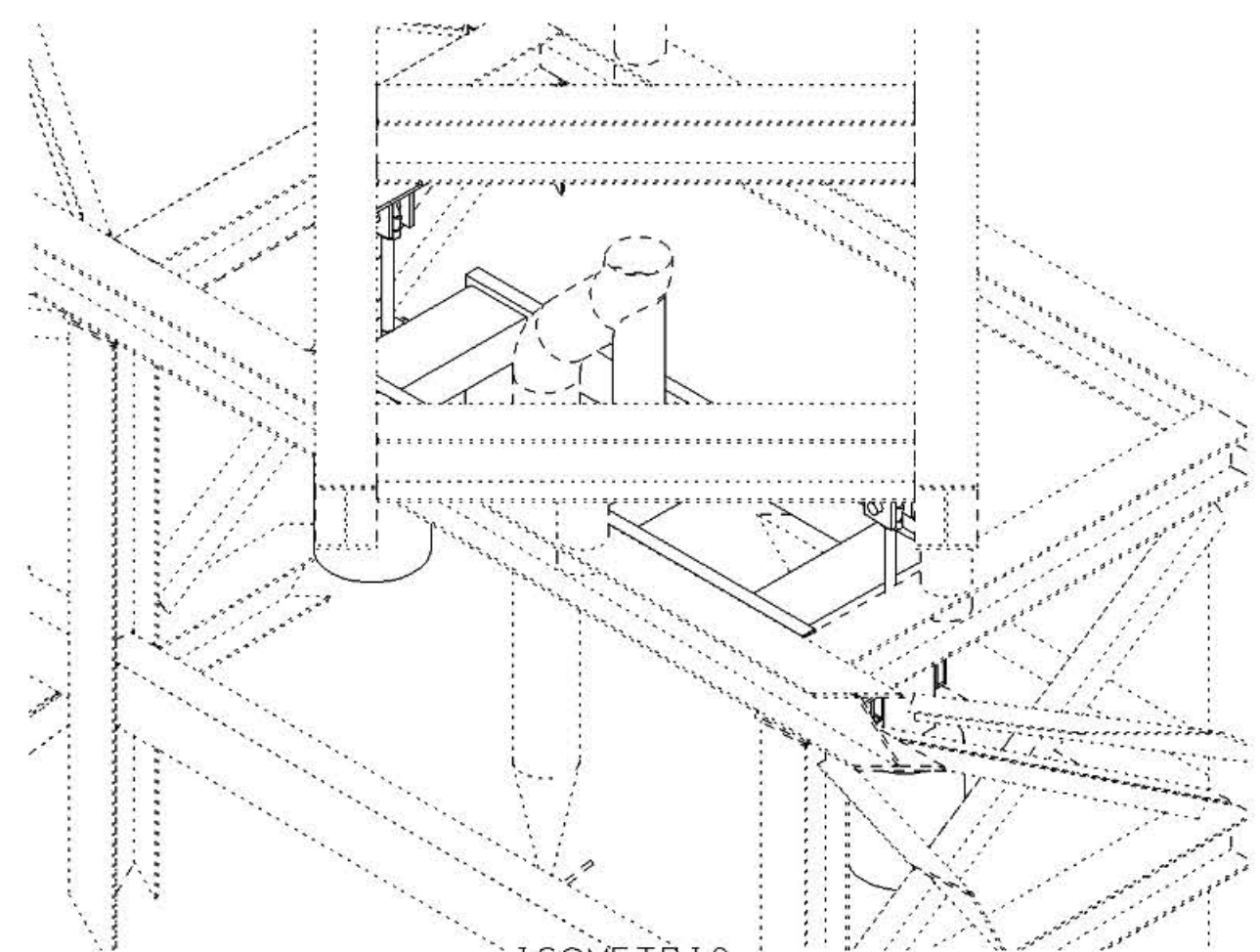


HP13PS2

ELEVATION LOOKING BACK  
THIS SUPPORT IS AT PIPE CLINE ELEV 87'-5 3/4"

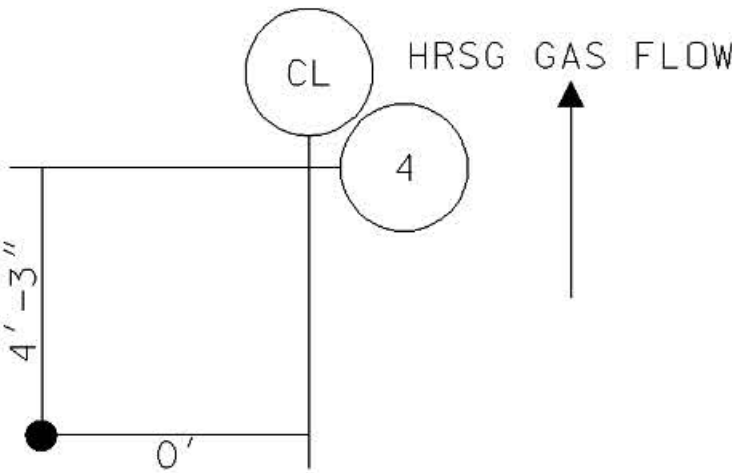


PLAN VIEW (GAS FLOW BOTTOM TO TOP)



ISOMETRIC

- NOTES:
1. ALL PIPE SUPPORT STRUCTURAL COMPONENTS TO BE HOT DIPPED GALVANIZED IN ACCORDANCE WITH ASTM123.
  2. ALL WELDS TO BE SEAL WELDS.
  3. FABRICATION TO BE IN ACCORDANCE WITH A.I.S.C. AND A.W.S. D1.1 LATEST EDITION.
  4. TAG SUB-ASSEMBLIES WITH DRAWING NUMBER, DETAIL REF AND ASSEMBLY TAG NUMBER i.e. 014149HP13B-HP13PS2-X
  5. TAG ALL LOOSE ITEMS WITH DRAWING AND PART NUMBER, i.e. 014149HP13B-X
  6. FIELD WELDED ITEMS SHALL BE TRIMMED AS NECESSARY FOR DIMENSIONAL ADJUSTMENT.
  7. \* = ADD 2" FOR FIELD TRIM. LENGTH SHOWN IS BEFORE FIELD TRIM IS ADDED.
  8. ALL ELEVATIONS ARE TAKEN FROM N/E ELEVATION 0'-0"
  9. (-) OFFSET FROM CENTERLINE OF HRSG = LEFT (+) OFFSET FROM CENTERLINE OF HRSG = RIGHT
  10. ● = DATUM POINT FOR ORDINATE DIMENSIONS.
  11. PIPE SUPPORT LOCATION TOLERANCE IS +/- 6" ALONG THE PIPE AXIS.
  12. DRAWINGS REFERENCE GRINNELL STANDARDS, HOWEVER EQUIVALENT EQUIPMENT FROM OTHER MANUFACTURES MAY BE PROVIDED.
  13. FIELD BOLTS ARE TO BE PROVIDED BY THE PIPE SUPPORT FABRICATOR. ALL BOLTING TO BE (3/4" DIA MIN) A-325 TYPE 1 WITH A-563 DH NUTS.



KEYPLAN

QUANTITIES SHOWN FOR (1) HRSG  
TOTAL OF (2) HRSG'S REQUIRED

ITEM	QTY	DESCRIPTION
1.	4	Shear Tab 1/2" X 1/2" X 2" Tabs (A-36)
2.	2	1 1/2 in Anvil (Grinnell) Fig 66: Welded Beam Attachment with pin and cotter pins
3.	2	1 1/2 in Anvil (Grinnell) Fig 290: Weldless Eye Nut - Right Hand, Black
4.	3	TS10X6X3/8 Length: 2'-0" (A500 Gr. B)
5.	2	1/2" Plate Steel, 8" X 1'-0"
6.	1	6" X-STG Length: 2'-2 3/8" (A-335-P91)*
7.	2	Size 48 Anvil (Grinnell) Fig 80-V: Type E, Vertical Constant Spring, Load 6760 lbf, Total Trav 4", Act Trav 2.8", Dir of Trav Up
8.	2	C8X11.5 Length: 7'-3" (A-36)
9.	2	1 1/2 in Anvil (Grinnell) Fig 140: Right Hand End Threaded Rod, Length: 1'-7 5/16", Black

A	MAY-06	INITIAL RELEASE	TVE	LBK	
REV	DATE	REVISION	BY	CHK	
THIS DRAWING HAS BEEN FURNISHED BY NOOTER/ERIKSEN INC.: THE INFORMATION KNOW HOW, AND ALL NEW OR PATENTABLE FEATURES ARE THE PROPERTY OF NOOTER/ERIKSEN INC. AND MUST NOT BE COPIED OR REPRODUCED WITHOUT PERMISSION. THE FOREGOING IN NO WAY APPLIES TO DESIGN AND FEATURES WHICH ARE OUR CUSTOMER'S PROPERTY.					
<b><i>NE</i> NOOTER/ERIKSEN</b>					
DWN	TVE	PIPE SUPPORT FOR : HP13			
CHK	LBK	HP13PS2			
PM		OWNER: JACKSONVILLE ELECTRIC AUTHORITY (JEA)			
PE	JLK	PURCHASER: BE&K / UTILITY ENGINEERING			
SE	LBK	PROJECT: BRANDY BRANCH			
TE		PLANT SITE: BALDWIN, FL			
PROJECT:		RELEASE DATE: 06-MAY-2004			
JEA BRANDY		JOB NO	CODE	LINE	SHT
				REV	FE
DRAWING NUMBER		014149-HP-13-B		A	X